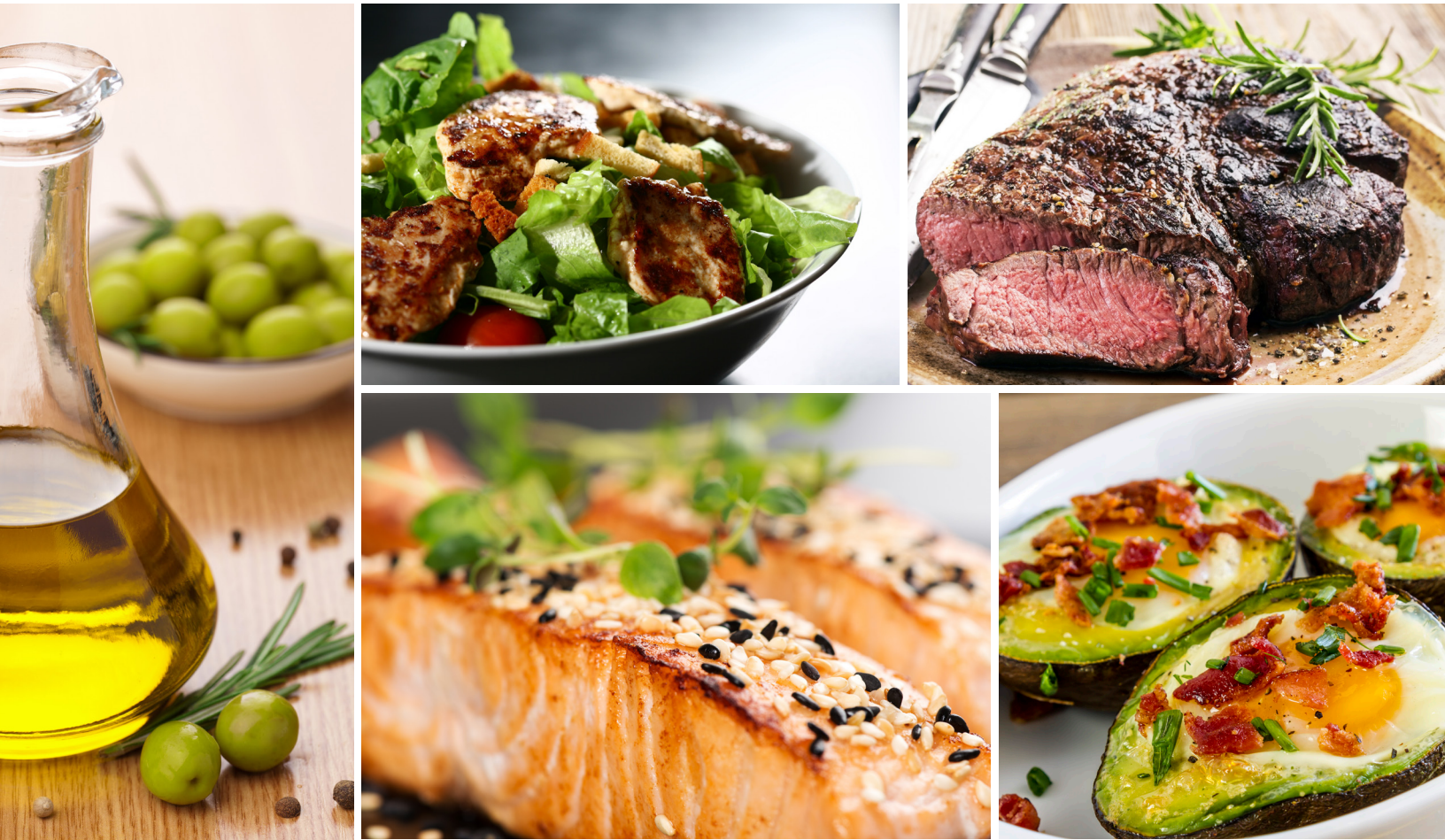


Dr. Berg
GET HEALTHY, LOSE WEIGHT
& FEEL GREAT

Beginner's Guide to
**HEALTHY KETO™ &
INTERMITTENT FASTING**



Eric Berg, DC

What Is Healthy Keto™ ?

Ketones are byproducts of fat burning. They can be used for fuel and occur when you lower your dietary carbs. *Ketosis* is the condition of this happening.

Healthy Keto™ is the healthy version of ketosis. I coined this term to differentiate from traditional forms of the ketogenic diet for epilepsy, which use low-quality nutrients. So, Healthy Keto™ is the version that uses quality, high-nutrient ingredients.

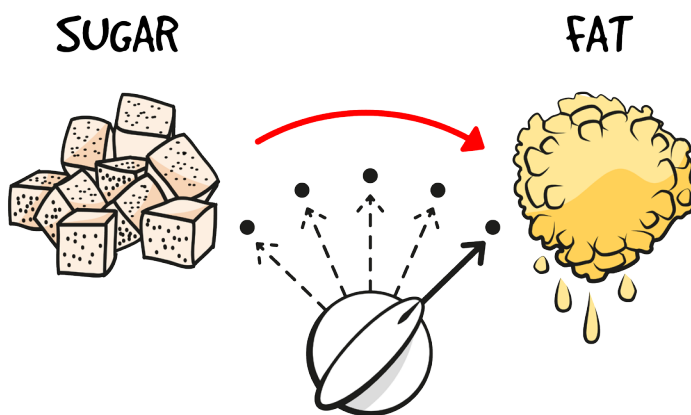
Why Does It Work?

The way one gets into ketosis is by reducing carbohydrates in the diet down to between 20 and 50 grams per day. Carbs stimulate the hormone that *stores* fat. This hormone is called insulin. In the presence of excessive insulin, the burning of fat is stopped cold.

There are huge benefits to keeping insulin in a normal range. Carbs and frequent eating keep insulin high.

To get into a state of ketosis so you can run on fat instead of glucose—and finally burn your own fat stores for fuel—you will need to start adapting your body to fat burning. You have to switch the body's preferred fuel source. This can take anywhere from three days to two weeks.

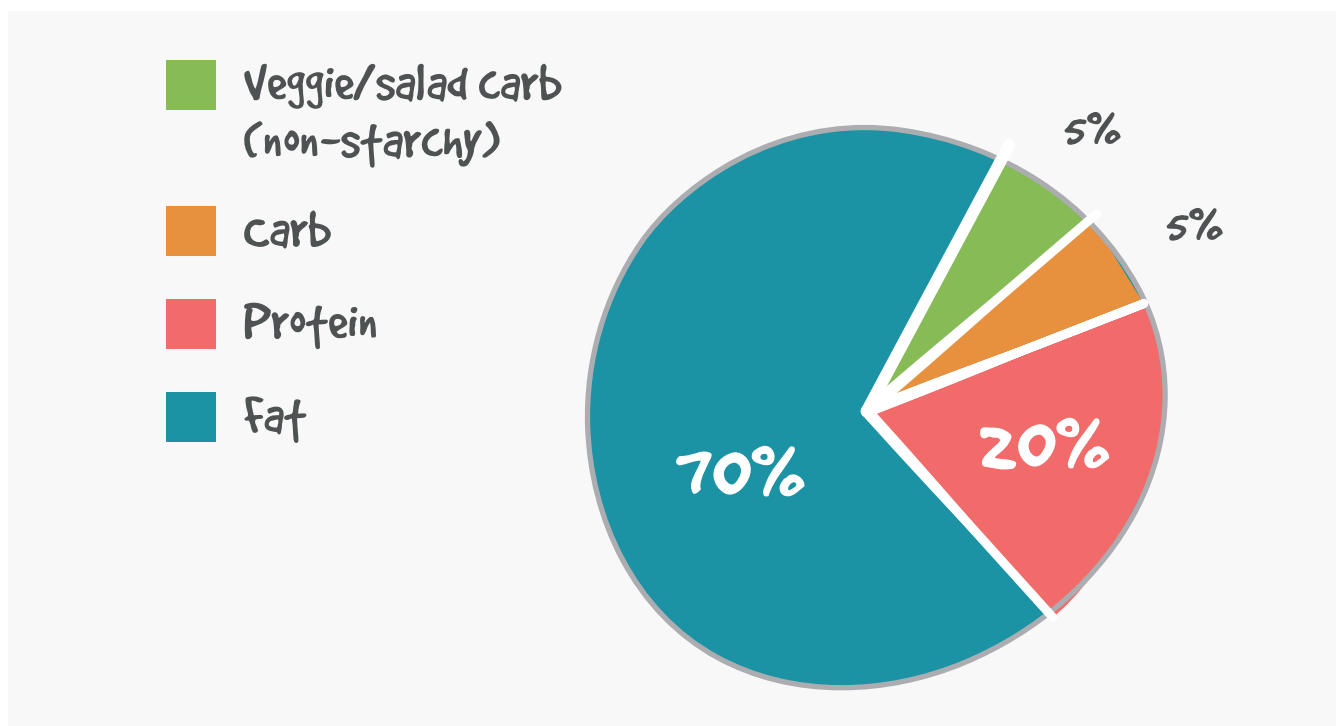
But then, you want to get that fat off the body, right? This is the way to do it! You'll actually lose weight while getting healthy and preserving lean muscle, so that you can burn more calories every day—unlike the muscle you lose by running on sugar and *never* tapping into fat burning.



What Do I Eat?

Most people need to consume between 1,200 and 2,100 calories per day, depending on the size of the body.

The diagram below illustrates the recommended percentages of calories in relation to each other. These are rough percentages that can vary from person to person based on your body size and activity level.



Carbohydrates

You want to keep your carbohydrate amounts between 20 and 50 grams per day. Many people use 30 grams to keep it simple, but the lower the carbohydrates, the greater the fat burning. When we calculate carbs, we will subtract the fiber. This is called net carbs, and this is what we want to use as our 5 percent of total calories.

NOTE: *Vegetables will not be a part of the carb equation. The exception is higher-sugar vegetables: squash, carrots, beets, peas, tomatoes and onions.*

Also, remember that even foods that don't seem to have carbs, such as nuts, seeds and hummus, actually do contain some carbs. Berries have less sugar than other fruits. That's why they're allowable in small amounts on the keto program.

What does 20-50 grams of carbohydrates look like?



28 g hummus = 3 g net carbs
60 g raspberries = 7.5 g net carbs
70 g blackberries = 8 g net carbs
Total: 18.5 g net carbs



56 g hummus = 6 g net carbs
141 g butternut squash = 16 g net carbs
Total: 22 g net carbs



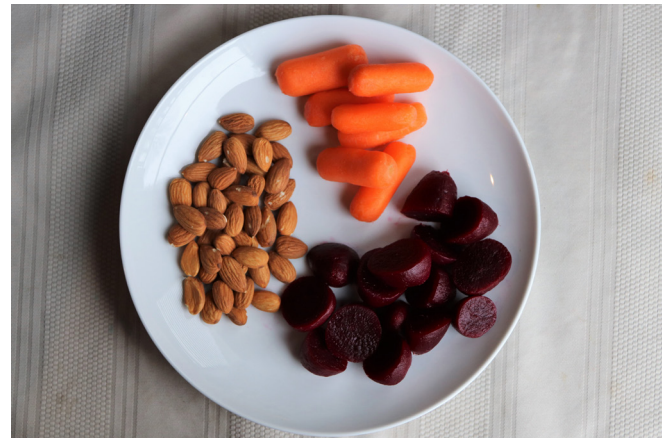
120 g raspberries = 15 g net carbs
123 g blackberries = 14 g net carbs
97 g butternut squash = 11 g net carbs
Total: 40 g net carbs



56 g hummus = 6 g net carbs
120 g raspberries = 15 g net carbs
123 g blackberries = 14 g net carbs
132 g butternut squash = 15 g net carbs
Total: 50 g net carbs



85 g carrots = 6 g net carbs
 56 g almonds = 6 g net carbs
 30 g sunflower seeds = 3 g net carbs
 42 g hummus = 5 g net carbs
Total: 20 g net carbs



85 g carrots = 6 g net carbs
 47 g almonds = 5 g net carbs
 136 g beets = 9.2 g net carbs
Total: 20.2 g net carbs



250 g tomatoes = 7 g net carbs
 170 g carrots = 12 g net carbs
 136 g beets = 9.2 g net carbs
 30 g sunflower seeds = 3 g net carbs
 42 g hummus = 5 g net carbs
 56 g almonds = 6 g net carbs
Total: 42.2 g net carbs



170 g carrots = 12 g net carbs
 136 g beets = 9.2 g net carbs
 250 g tomatoes = 7 g net carbs
 2 medium avocados = 8 g net carbs
 56 g almonds = 6 g net carbs
 100 g acorn squash = 8 g net carbs
Total: 50.2 g net carbs

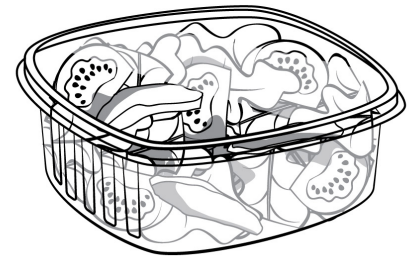
Vegetables

This is the category of foods you will not want to restrict.

I recommend consuming

- 7–10 cups of salad per day, or
- 4–6 cups of other vegetables like broccoli, Brussels sprouts, etc. If you are doing cruciferous vegetables, steaming or slightly sautéing is recommended; and as a special note, more antioxidants are released when you slightly cook them.

If you go shopping for salad, realize that one cup equals 1 ounce. To give you a reference, bags of salad are often 5 ounces (five cups), and plastic containers are also 5 ounces.



Consuming large salads with spring mix, spinach, arugula or even cabbage will start to give you the nutrients that help undo insulin resistance. There are numerous studies demonstrating that various nutrients—vitamins A, B, C, D and K, potassium, magnesium and chromium—improve insulin balance, which is the icing on the cake. (Sorry, I couldn't resist that one.)

Below are some examples of amounts of salad.



5 cups



7 cups



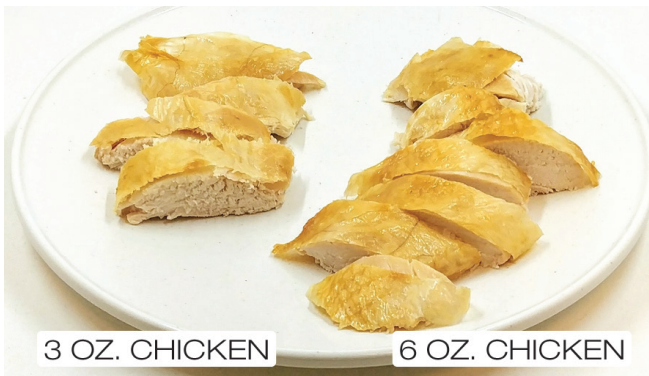
10 cups

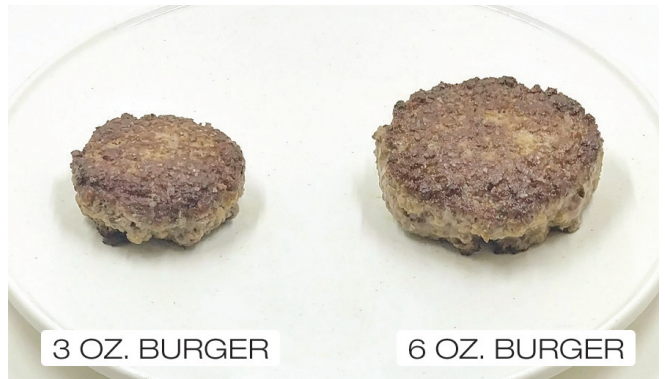
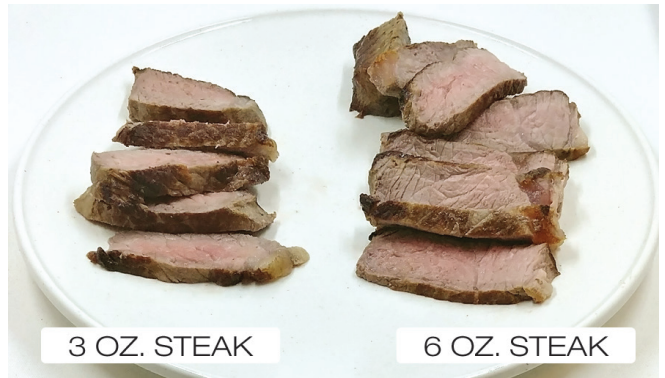
The **fiber** in the leafy greens will feed your gut microbes. They in turn convert the fiber into butyrate (a type of fatty acid), which lowers your insulin and helps you lose weight. Although fiber is a carbohydrate, it has zero effect on your insulin levels. The greater the diversity of vegetables, the more wide-spectrum your microbes will become.

CAUTION: *If you bloat from vegetables, steam them or reduce the amounts until you have no bloating. Bloating will reduce your results.*

Protein

On average, you will be consuming 3 to 6 ounces of protein at each meal. What does this look like? See below.





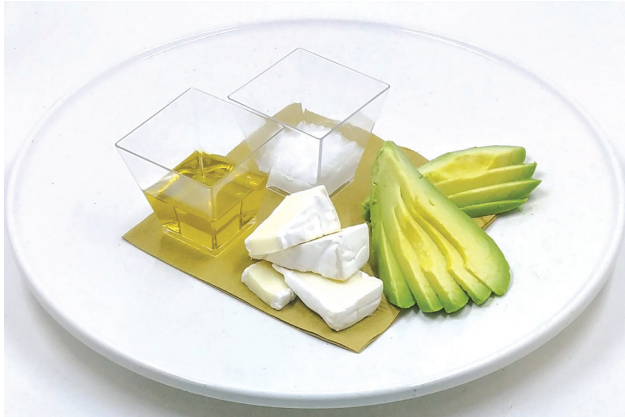
If you are starting with three meals a day, here are two examples of how much *total* protein you could eat in one day.



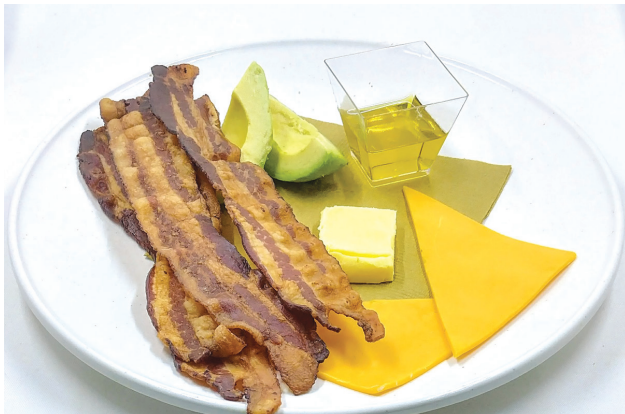
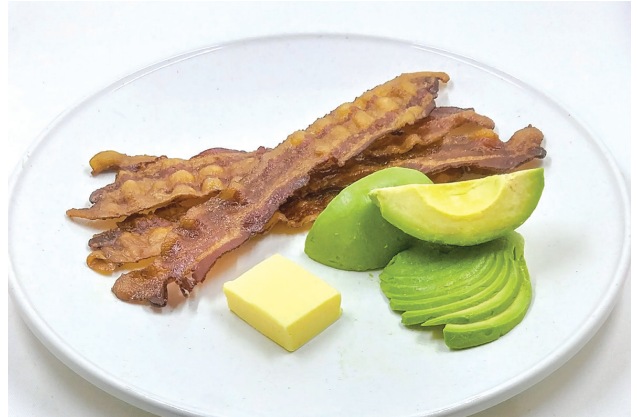
Fat Amounts

When you calculate 70 percent of your total calories per day, the fat may initially seem like a lot. However, because fat has more than double the calories of the same volume of proteins and carbs, it's not that much.

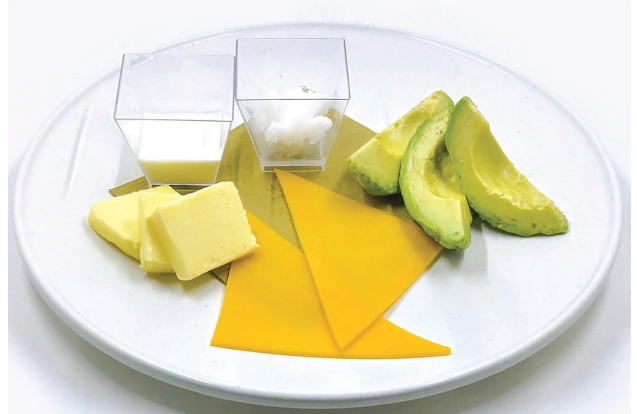
Here are a few examples of what total fat for the day looks like:



OR



OR



What Do I Avoid?

Sugar

You will need to reduce your carbs down to between 20 and 50 grams, and your dietary sugar down to zero! There are acceptable sweet alternatives. The three that I recommend, which are easy to get, are stevia, non-GMO erythritol and non-GMO xylitol.

Avoid

- Table sugar (cane and beet)
- Fructose
- Honey
- Brown sugar
- Agave nectar
- Dextrose
- Maltodextrin
- High-fructose corn syrup
- Maple syrup
- Rice syrup
- Juice
- Alcohol

Grains and Starches



Grain products to avoid include bread (sprouted breads too), pasta, cereal (even oatmeal), crackers, biscuits, pancakes and waffles. Despite something being gluten-free, it's still a grain. Gluten is the protein in grains.

You have to avoid ALL grains, including oats, wheat and barley. Quinoa, although a seed, should also be avoided.

Exception: Small amounts of Finn Crisp Thin Rye Crispbread, a brand of rye crackers that only has 4 grams of sugar. This is net carbs, which is the total carbohydrate minus the fiber. The product is non-GMO, and in low quantities it does not seem to negatively affect ketosis.

Starches to avoid include white and red potatoes, sweet potatoes, yams, white and brown rice, corn (even though it's a vegetable) and cornstarch.

Fruits

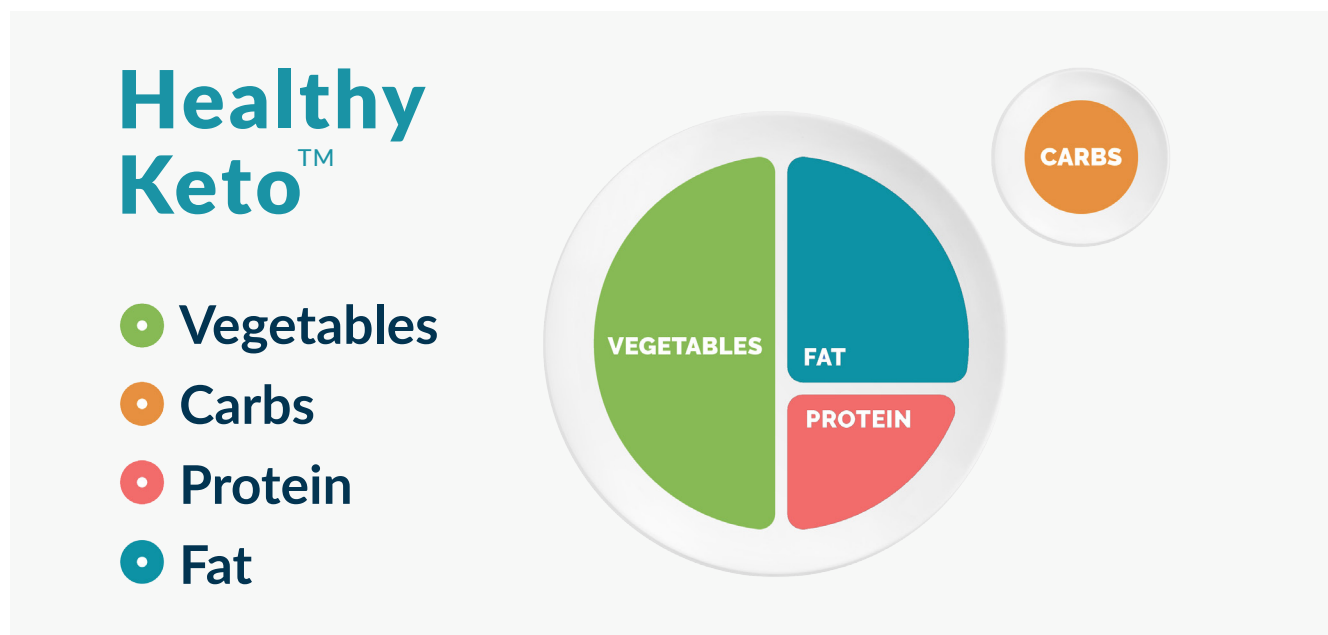
Fruits to avoid include apples, bananas, pineapples, pears, dates, figs, grapes (and raisins), as well as fruit juices (orange, grape and apple juice—even tomato juice).

Exception: Small amounts (one half to one cup) of berries per day.

Legumes (beans)

Legumes to avoid include beans.

Exception: Hummus.

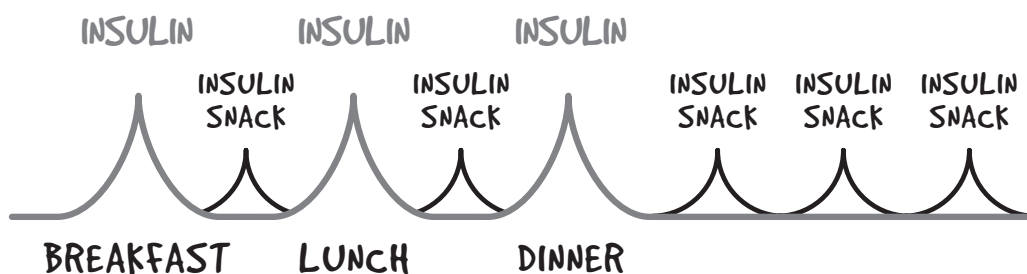


Intermittent Fasting

Intermittent fasting (IF) is not a diet. It is limiting the frequency of meals, allowing you to rely on fat burning for all the time between meals and while you're sleeping at night.

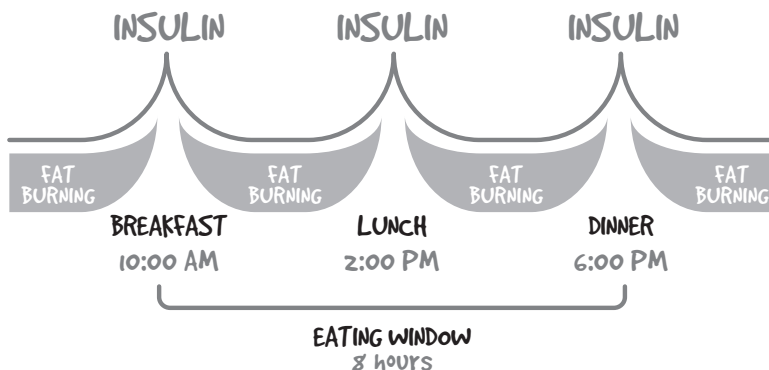
RULE: DON'T EAT IF YOU ARE NOT HUNGRY.

This is important because one of the primary triggers of insulin is *eating*—eating anything. Eating five to six times a day—and let's not forget snacking—will spike insulin. Frequent eating throughout the day causes chronic sustained higher levels of insulin.



Eating less often with no snacks to spike insulin in between meals is **the most powerful way** to correct insulin resistance.

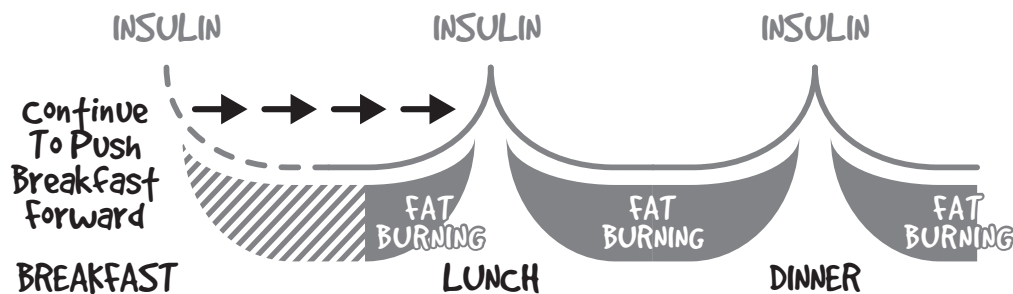
To do this, first start with three meals per day—NO snacks—absolutely nothing between meals but water, black coffee and other non-caloric, non-insulin-spiking drinks. (Too much coffee, however, will also spike insulin.)



Keeping insulin at a normal level between meals and during sleep allows the pancreas to rest and recover. However, some people have a hard time going from one meal to the next because they experience blood sugar crashes and severe hunger.

The solution to this is to consume more fat during the meal. Fat not only satisfies you the most; it triggers insulin the least. Consuming lean protein and low-fat meals keeps you hungry, so the answer is more fat.

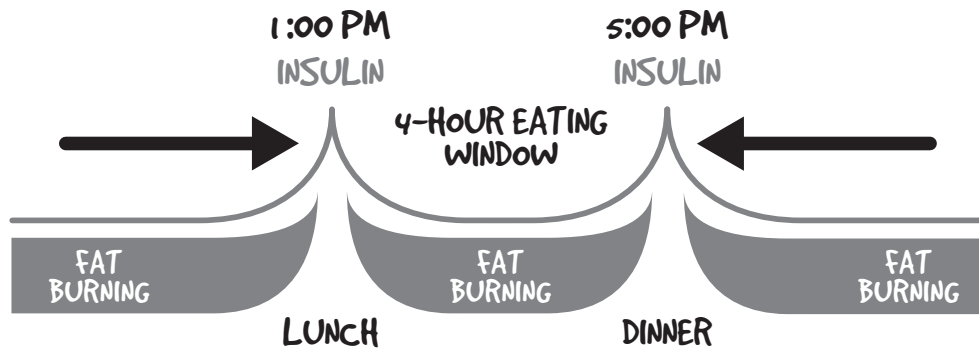
The goal over time is to *gradually* transition from three meals per day to a shortened daily eating window of only two meals per day.



This is not about lowering your calorie intake; it's about eating less often. Your new goal should be to reduce the frequency of meals you eat and avoid spiking insulin.

Again, **low-calorie diets do not work** because they keep you hungry and craving—even worse, they deprive you of nutrients, eventually slowing your metabolism. If you're transitioning from three to two meals, make sure those two meals contain the same calories as the three meals.

As you adapt, which is called keto-adaptation, it will be easier to go longer before your first meal. Continue to shorten your eating window as gradually as you can, as seen in the diagram below with a four-hour eating window. There are many different meal schedules you can use based on the demands of your life.

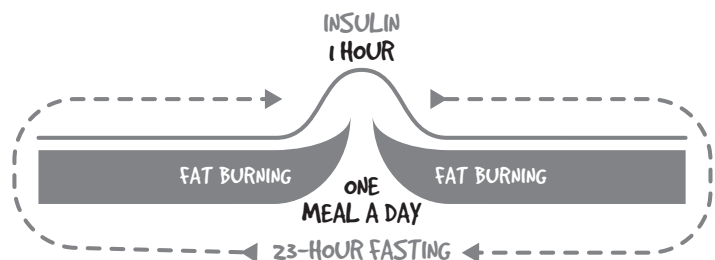


It is okay to be a little hungry as long as it does not impair your cognitive function or cause headaches or weakness.

Allow your body to adjust to running on fat. For some true sugar junkies, this can take a few months. But your cells *will* eventually adjust, and you'll enter full fat-burning mode. Then it gets *really* easy to resist snacking because you have no cravings and are not hungry anymore. When you see the weight simply melting off, this will motivate you to stick to your new way of eating.

I've found that at first you'll need more fat with meals; however, as you burn more of your own fat, you'll need less. Some people decide to even do one meal per day, especially if the thyroid is very slow. But with one meal a day, just make sure the meal is a robust one, containing all the needed nutrients to fortify your body with vitamins, minerals, amino acids, those important fatty acids, trace minerals—all of it. (This can be aided with green drink powders and high-quality electrolyte supplements that will help you get your daily requirements for potassium.)

Let your body tell you when to transition to one meal a day. The best clue that you are in deep ketosis is your *hunger disappears!*



Meal Examples

3 Meals per Day

3 MEALS PER DAY ≈ 1,800 CALORIES

MEAL 1 — MACRONUTRIENT BREAKDOWN		MEAL 2 — MACRONUTRIENT BREAKDOWN		MEAL 3 — MACRONUTRIENT BREAKDOWN	
Fat: 33 g	Protein: 3 oz 32 g	Fat: 50 g	Protein: 4 oz 27 g	Fat: 36 g	Protein: 4 oz 42 g
550 Calories		650 Calories		650 Calories	
Other carbs: 2 g	3 Cups Vegetables + 11 g Fat from Butter	Other carbs: 6 g	3.5 Cups Salad + 14 g Fat from Salad Dressing	Other carbs: 3 g	3 Cups Vegetables + 11 g Fat from Butter

3 MEALS PER DAY ≈ 1,800 CALORIES

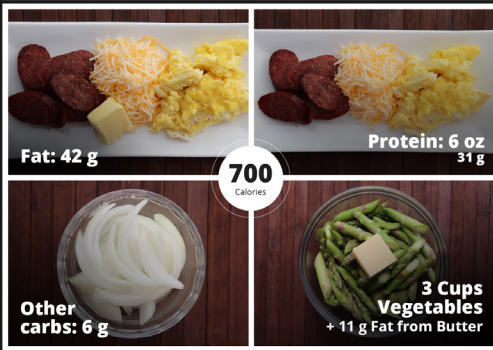
MEAL 1 — MACRONUTRIENT BREAKDOWN		MEAL 2 — MACRONUTRIENT BREAKDOWN		MEAL 3 — MACRONUTRIENT BREAKDOWN	
Fat: 38 g	Protein: 5 oz 18 g	Fat: 36 g	Protein: 3 oz 18 g	Fat: 11 g	Protein: 4 oz 40 g
600 Calories		600 Calories		630 Calories	
Other carbs: 2 g	3.5 Cups Salad + 14 g Fat from Salad Dressing	Other carbs: 7 g	3.5 Cups Salad + 14 g Fat from Salad Dressing	Other carbs: 2 g	3.5 Cups Salad + 14 g Fat from Salad Dressing

2 Meals per Day

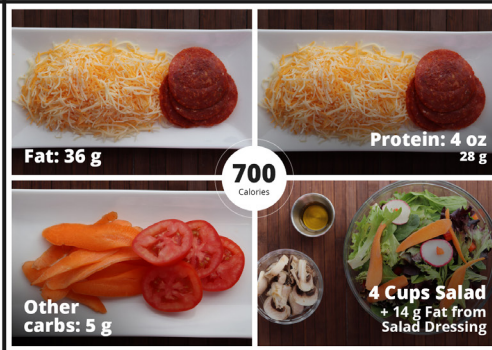
2 MEALS PER DAY ≈ 1,500 CALORIES



MEAL 1 — MACRONUTRIENT BREAKDOWN



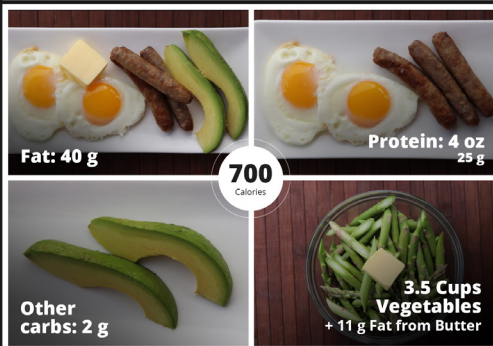
MEAL 2 — MACRONUTRIENT BREAKDOWN



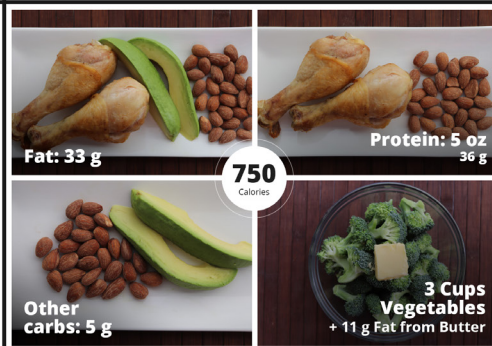
2 MEALS PER DAY ≈ 1,500 CALORIES



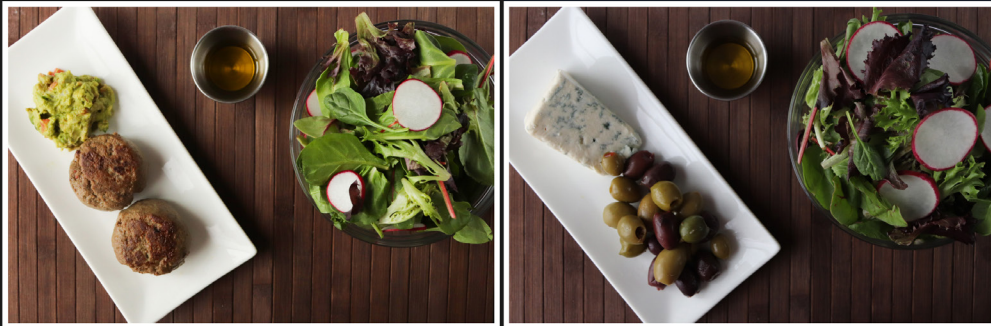
MEAL 1 — MACRONUTRIENT BREAKDOWN



MEAL 2 — MACRONUTRIENT BREAKDOWN

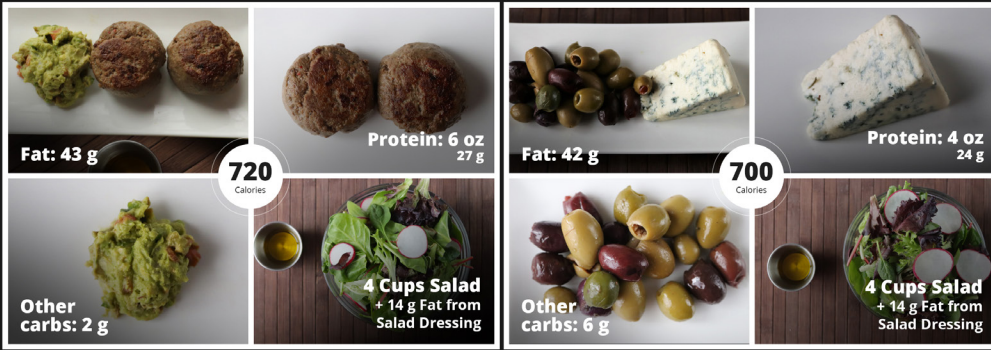


2 MEALS PER DAY ≈ 1,500 CALORIES



MEAL 1 — MACRONUTRIENT BREAKDOWN

MEAL 2 — MACRONUTRIENT BREAKDOWN



1 Meal per Day

1 MEAL PER DAY ≈ 1,200 CALORIES

MEAL 1 — MACRONUTRIENT BREAKDOWN

Fat: 68 g	Protein: 9 oz 54 g
Other carbs: 6 g	5 Cups Salad + 14 g Fat from Salad Dressing

1,150 Calories

1 MEAL PER DAY ≈ 1,200 CALORIES

MEAL 1 — MACRONUTRIENT BREAKDOWN

Fat: 87 g	Protein: 9 oz 55 g
Other carbs: 4 g	7 Cups Salad + 14 g Fat from Salad Dressing

1,150 Calories

1 MEAL PER DAY = 1,200 CALORIES

MEAL 1 — MACRONUTRIENT BREAKDOWN

Fat: 61 g	Protein: 11 oz 62 g
Other carbs: 1 g	7 Cups Vegetables + 25 g Fat from Salad Dressing and Butter

1,200 Calories

1 MEAL PER DAY = 1,200 CALORIES

MEAL 1 — MACRONUTRIENT BREAKDOWN

Fat: 95 g	Protein: 15 g
Other carbs: 12 g	7 Cups Vegetables + 14 g Fat from Salad Dressing

1,200 Calories

What Are the Benefits?

- No more cravings
- Less hunger between meals
- Better memory
- Cardiovascular protection
- Normal blood sugar
- Improved mood
- Improved cholesterol
- Way more energy
- Amazing skin
- Much less inflammation
- Improved sleep

Keto-Adaptation Side Effects

Your body is going to have to switch fuel sources and will need a new cellular process to accomplish this. When you follow this plan, your cells will change over and adapt, which usually takes between three days and two weeks. It all depends on how serious your insulin resistance is.

During this adjustment phase, you might experience some of the following symptoms:

- Keto flu (feeling run-down)
- Fatigue
- Irritability
- Muscle cramps
- Kidney stones
- Sleep problems
- Constipation
- Keto rash

Apple Cider Vinegar (ACV)

Take 2 tablespoons of ACV in a 16-ounce glass of water. Add some lemon juice (2 Tbsp) and drink up. This will help the transition into fat burning and increase your digestion and energy. Lemon can also decrease any risk of kidney stones if you are susceptible.

B Vitamins (Nutritional Yeast)

Doing ketosis requires more B vitamins to allow the energy factories (mitochondria) to do their job. Nutritional yeast provides a good natural source. Make sure your nutritional yeast is not enriched with synthetic B vitamins. I do recommend my version, which comes in tablets (Nutritional Yeast). You'll notice this will greatly help you with exercise and having more endurance. When someone is deficient in B vitamins, they can experience fatigue and more stress.

Potassium (Electrolytes)

The body requires key minerals when doing keto, specifically potassium and magnesium. However, you should never take only one mineral without the related ones, as it can create an imbalance. Using a high-quality electrolyte blend is recommended.

My brand comes with all the electrolytes but in the ratio that matches most people's deficiencies, with super-high potassium, good amounts of magnesium, and lower amounts of sodium and calcium. It also comes with trace minerals and contains no maltodextrin. When you are deficient in potassium and magnesium, you can notice fatigue and a lack of endurance.



Go to <https://shop.drberg.com/> for more information.

Frequently Asked Questions on Ketosis and Intermittent Fasting



What is a ketone?

A ketone is a byproduct of fat being burned in your body. It is basically a source of energy (fuel) that is an alternative to glucose. Ketones are the preferred fuel for the body and are more efficient for the brain and the heart.

How long before I start losing weight?

Often people want weight loss to start happening right now. Your body has been running on glucose for your entire life, though. Your cells have to build new enzymes—a whole new cellular machine—to break down fat as a new source of fuel. However, you should start experiencing fat loss in three days, then more and more as your body becomes a fat-burning machine.

Once you get there, you won't have sugar cravings anymore. You'll have better blood sugar. Your memory will be sharper, and you'll urinate less at night and sleep better because your blood sugar won't be plummeting during the night after sugar spikes.

I started the keto diet about a week ago. Now I'm tired constantly. What do I do?

As your body adjusts to fat burning, you will need more B vitamins. The nutrient you need a lot of to keep the fatigue away and help your adrenals and metabolism is B₅. A sodium deficiency could also produce fatigue and weakness.

Can I eat beets, peas, tomatoes, corn and potatoes on a keto diet?

Starchy vegetables like beets, peas and carrots can be eaten in small quantities because they are rich in fiber, which reduces the insulin spike. Tomatoes are moderately sweeter and can be consumed in higher amounts than these others; however, potatoes and corn must be eliminated.

What kind of liquids should I be drinking that won't interfere with ketosis?

- Filtered or spring water.
- Bone broth is good—even during the fasting period between meals. Too much can slow ketosis for some people.
- Homemade sodas with flavored stevia—these are great.
- Apple cider vinegar in water is good for helping you manage insulin and also for overcoming insulin resistance.
- Unsweetened almond milk.

But avoid alcohol and even coconut water.

Is coffee okay on the ketogenic diet?

Sure, if you're having about one 8-ounce cup per day, not 15 cups. The problem with coffee is that it is the third most sprayed crop in the world, *and* it depletes the adrenals. If you're going to drink coffee, make sure it's organic, that the creamer is organic, and that you use xylitol, which is GMO-free and tastes just like sugar.

What about Bulletproof Coffee?

Bulletproof Coffee is coffee with added grass-fed butter and a fat called MCT oil, which is extracted from coconut oil. If you want to use that as a meal, fine; but it can trigger insulin a little. That being said, I think it is good to do in the beginning, as it reduces hunger. However, for some people it could slow progress; so experiment.

What are the best supplements to take while on keto?

There are several of my supplements that I recommend for various situations, all of them found on my website <https://shop.drberg.com/>:

- **Electrolyte Powder:** This is loaded with potassium, magnesium, chlorides and trace minerals to provide your cells with the right nutrients.
- **Blood Sugar Support Formula:** This supports healthy blood sugar levels to enhance the ketosis state.
- **Nutritional Yeast:** This has all the B vitamins you need and more.
- **Wheat Grass Juice Powder:** This is packed with vitamins and minerals as well as phytonutrients.

Can I chew gum?

This is a minor concern, but yes. You should choose (sorry, bad pun) xylitol gum.

Can I have a cheat day?

No. If you want to get into ketosis and stay there, you need to stick to the plan. It can take over a week to get back into ketosis after a sugar slip.

Can my cholesterol go high on a ketogenic diet?

When you lose weight, fat cells shrink. In a fat cell, there are triglycerides and cholesterol. Now, as that fat cell shrinks, you can burn triglycerides, but you cannot burn cholesterol.

So it will go into the blood, go to the liver, and come out through the bile. But you'll be totally fine as long as your triglycerides are low. (If you're not using those as fuel, then you're eating too much sugar.)

What can I do about ketosis and constipation?

There are many scenarios that can cause constipation with the ketogenic diet. Most people assume it's a fiber issue, but it's not that simple. You want to compare what you were doing before ketosis and after.

Look at the change in vegetable fiber consumption. If you don't have enough gut bacteria to digest all these vegetables, they will cause bloating, constipation, gas and all kinds of digestive issues.

Some people can do vegetables and others can't, of course. Some people can't do cabbage; others can't do cruciferous. So you might have to switch to less fibrous vegetables for your potassium, such as various kinds of lettuce, and especially kale and beet greens.

Electrolytes greatly assist with constipation too. If you need more electrolyte support, try my Electrolyte Powder. It helps supply the required 4,700 mg/day of potassium, which is hard to manage without high vegetable consumption.

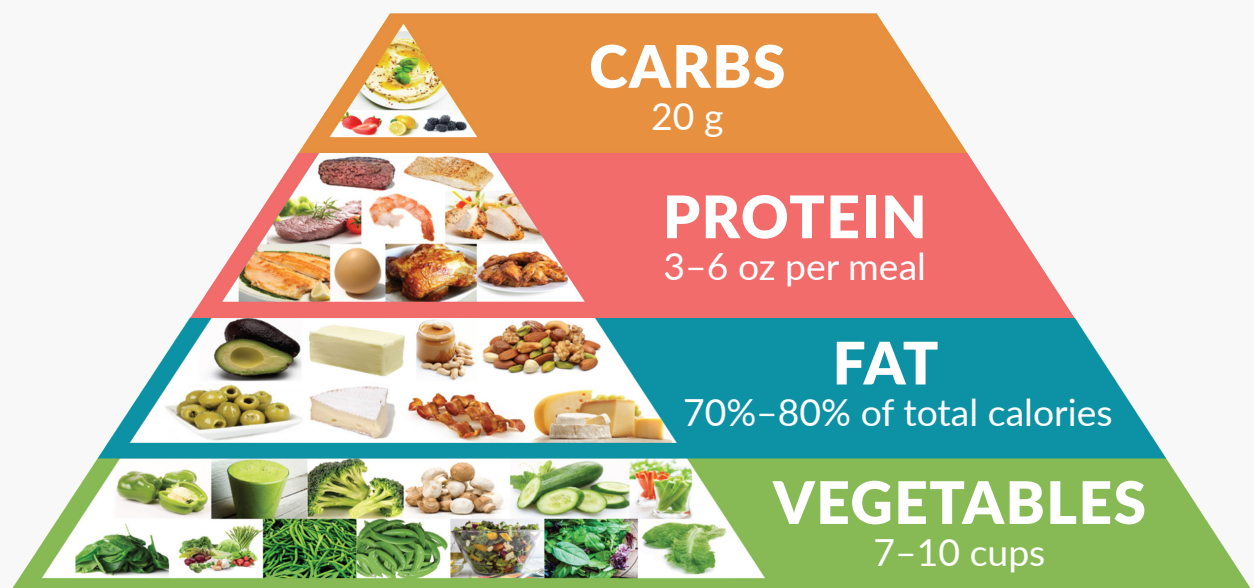
What is ketoacidosis? Is this good or bad?

Ketoacidosis is a very dangerous condition that happens only when you're a type 1 diabetic and completely stop making insulin. This results in raising your acid levels far beyond normal. However, Healthy Keto™ will not produce acid levels even close to those of a ketoacidosis condition.

Can I do IF without doing a keto diet—or should I do both?

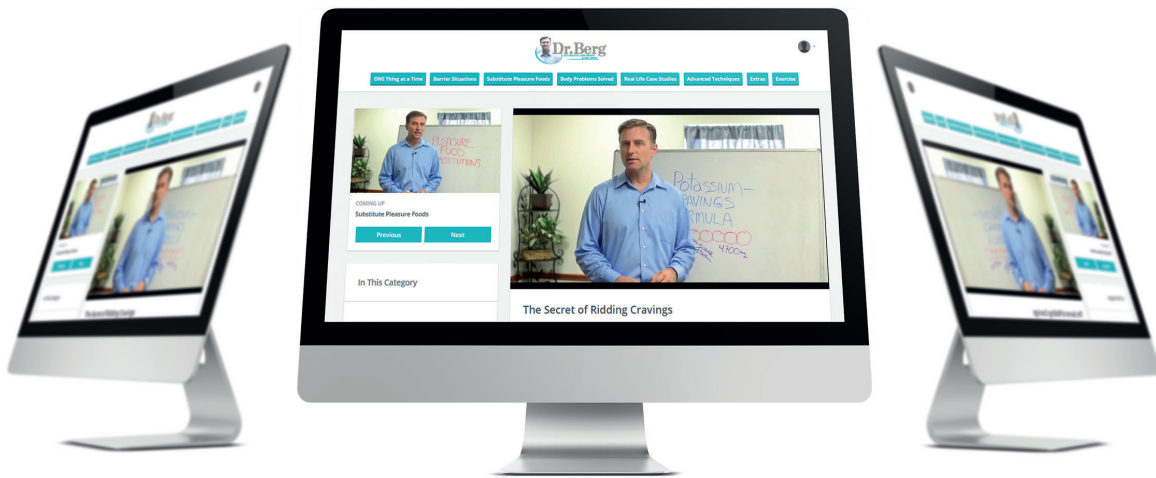
Well, if you're doing intermittent fasting alone, but you're eating lots of carbohydrates and not eating nutrient-dense foods, your skin, hair and nails will suffer. I recommend doing both, as they both complement the reduction of insulin.

Healthy Keto™ Food Pyramid



Go to My YouTube Channel for Further Education & Use My Membership Site!

WHAT'S INSIDE



EXCLUSIVE MEMBERSHIP

**Over 200 Video Lessons to
Get Yourself Healthy & Looking Great Now!**

Body Type Techniques

Learn from Case Studies Just Like You

Details on What to Eat and What to Avoid

Amazing Tips on How to Stick to Your Plan

Nutritional Recommendations for Your Body Problem

Advanced Exercise Strategies for Toning & Fat Burning

Dr. Berg will guide you step by step to help you achieve
a healthier body and a healthier you!

<https://www.drberg.com/exclusive-membership>

703-354-7336

© 2019 by Eric Berg, DC

All rights reserved. No part of this publication may be reproduced or transmitted in any form or by any means, electronic or mechanical, including photocopying, recording or any other information storage and retrieval system, without the written permission of the publisher, except in the case of brief quotations embodied in critical articles or reviews.

HEALTHY KETO is a trademark owned by Eric Berg.

Limit of Liability/Disclaimer of Warranty

This booklet is not intended as a substitute for the medical recommendations of physicians or other healthcare providers. Rather, it is intended to offer information for educational purposes and to help the reader cooperate with physicians and health professionals in a joint quest for optimum health.

The information discussed in this booklet—including any dietary and other substances, materials or products—has not undergone evaluation and testing by the U.S. Food and Drug Administration or similar agency of any other country and is not intended to diagnose, treat, prevent, mitigate or cure any disease. The reader and user should treat this information as a general guide and not as the ultimate source of information, since it is based on the opinion and sole experience of Eric Berg, DC. The advice and strategies contained herein may not be suitable for your situation. Please consult with a physician or other healthcare professional where appropriate.

While the publisher and the author have used their best efforts in preparing this booklet, they make no representations or warranties with respect to the accuracy or completeness of its contents and specifically disclaim any implied warranties of merchantability or fitness for a particular purpose. No warranty may be created or extended by sales representatives or written sales materials. Neither the publisher nor the author is responsible for any goods and/or services referred to in this book, and both expressly disclaim all liability in connection with the fulfillment of orders for any such goods and/or services or for any damages, loss or expense to person or property arising out of or relating to them. Neither the publisher nor the author shall be liable for any loss of profit or any other commercial damages, including but not limited to special, incidental or consequential damages.

Regular exercise and proper nutrition are essential for achieving your weight-loss goal.



Dr. Berg

GET HEALTHY,
LOSE WEIGHT & FEEL GREAT

www.drberg.com

The Health & Wellness Center

703-354-7336

4501 Ford Avenue

Alexandria, VA 22302

 www.facebook.com/drericberg

 www.pinterest.com/drericberg

 www.twitter.com/@drericbergdc

© 2019 by Eric Berg, DC